

# Second Pacific Islands Climate Outlook Forum

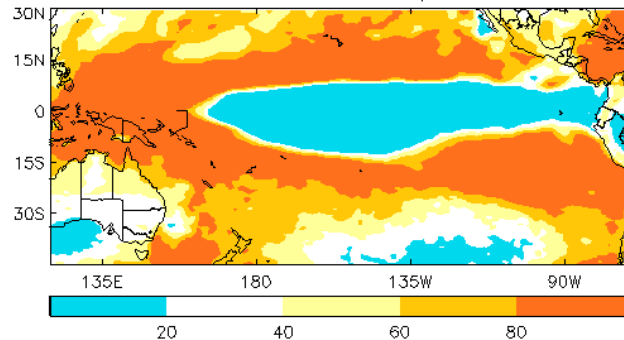
## PICOF-2

“Whole Pacific region air temperature and sea surface temperature outlooks for NDJ 2016-17.”

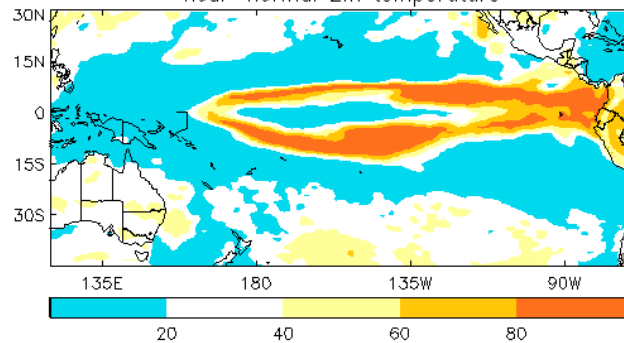
- Name: Simon McGree
- Title: Senior Climatologist
- Organisation: COSPPac-BoM

# UKMO Air Temperature

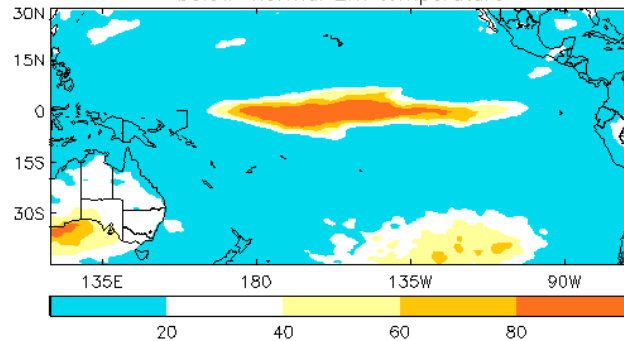
Probability of tercile categories Nov/Dec/Jan Issued Oct 2016  
above-normal 2m temperature



near-normal 2m temperature



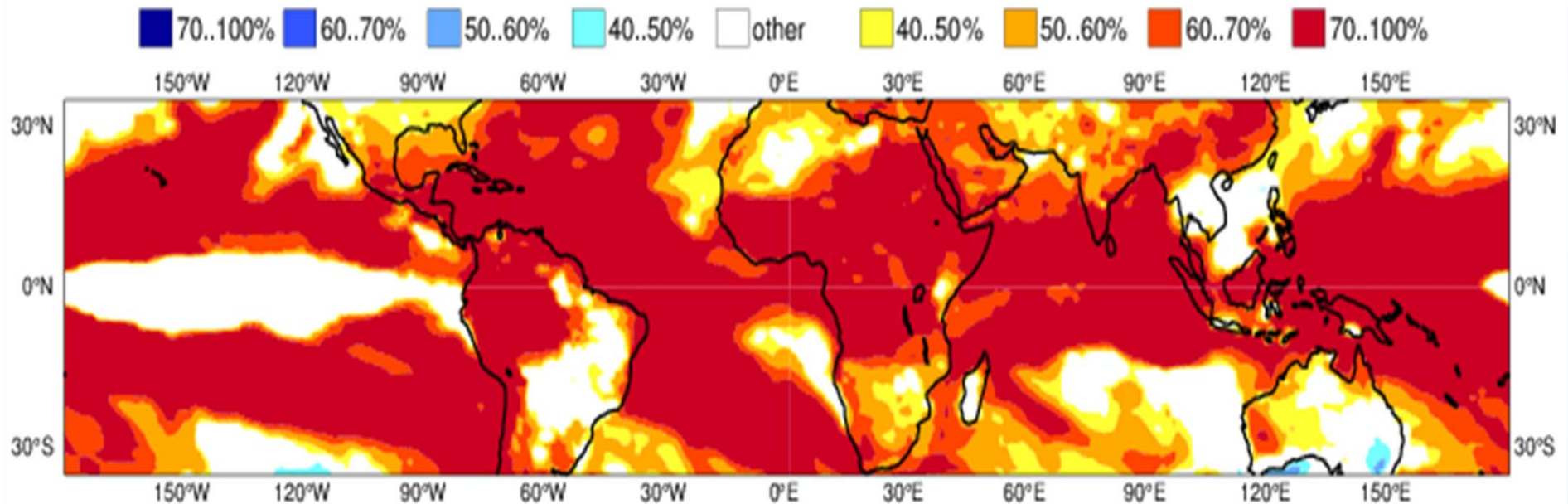
below-normal 2m temperature



<http://www.metoffice.gov.uk/research/climate/seasonal-to-decadal/gpc-outlooks/glob-seas-prob>

ECMWF Seasonal Forecast  
Prob(most likely category of 2m temperature)  
Forecast start reference is 01/09/16  
Ensemble size = 51, climate size = 450

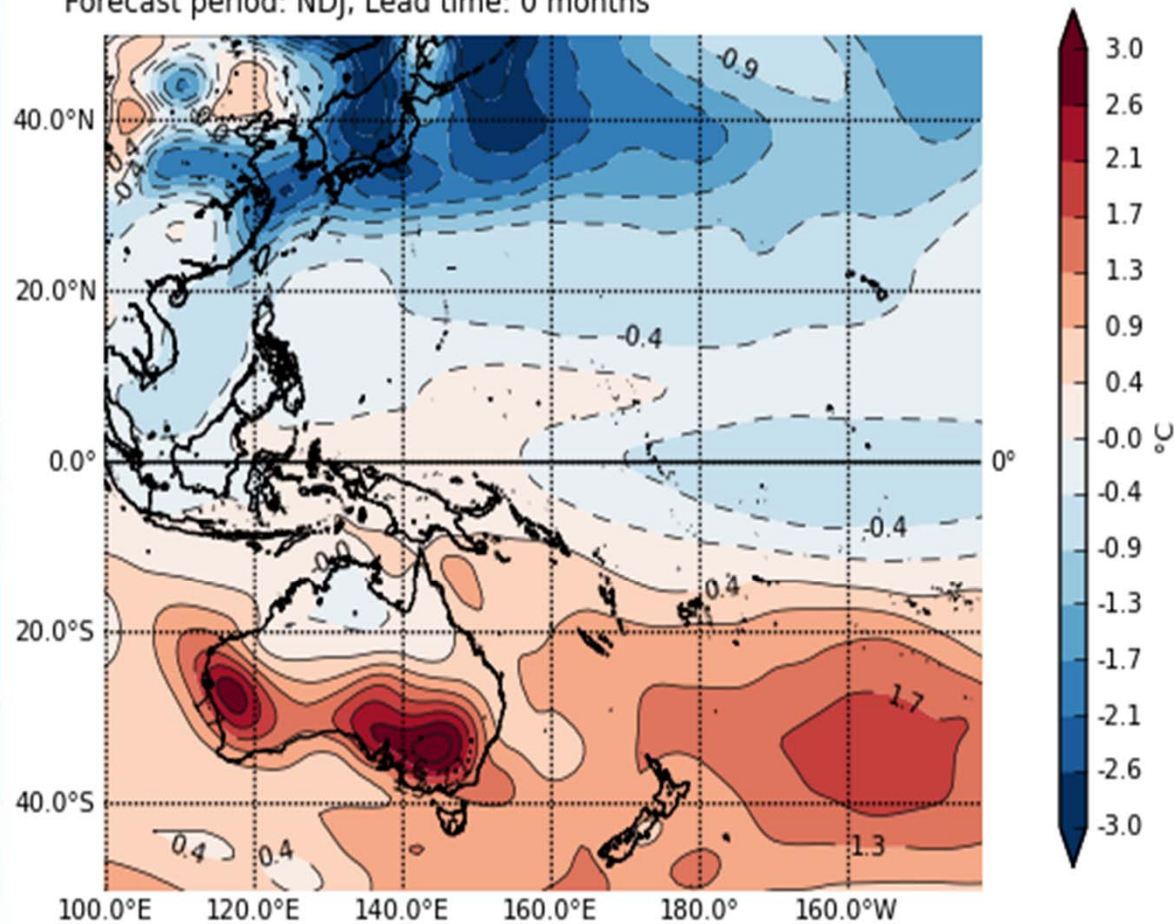
System 4  
NDJ 2016/17



[http://www.ecmwf.int/en/forecasts/charts/seasonal/2m-temperature-public-charts-long-range-forecast?time=2016090100,2904,2016123100&area=Tropics&forecast\\_type\\_and\\_skill\\_measures=tercile%20summary](http://www.ecmwf.int/en/forecasts/charts/seasonal/2m-temperature-public-charts-long-range-forecast?time=2016090100,2904,2016123100&area=Tropics&forecast_type_and_skill_measures=tercile%20summary)

# POAMA Air Temperature

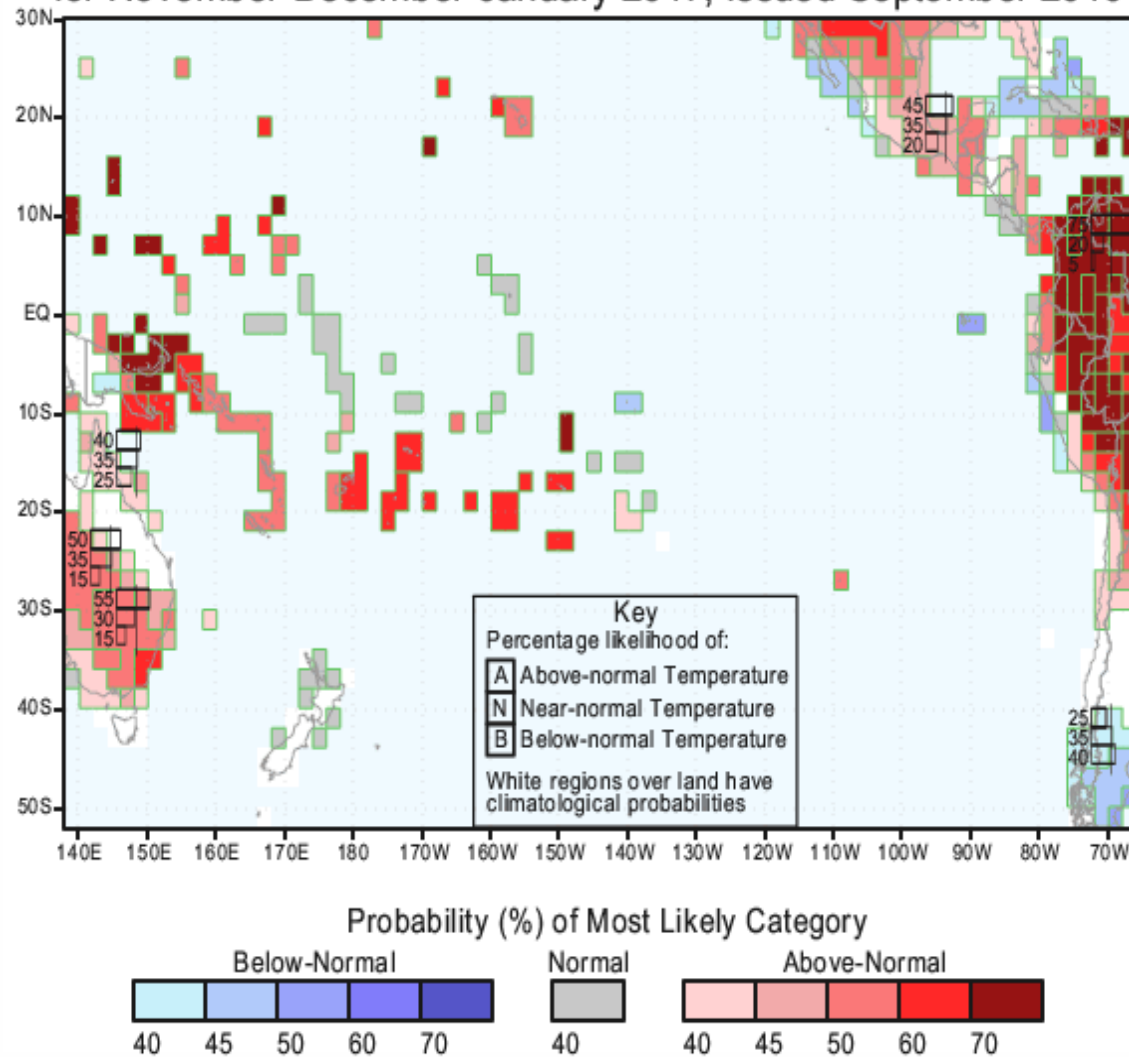
PACCSAP: Dynamical Seasonal Outlooks for the Pacific.  
Outlook based on POAMA 2 CGCM adjusted for historical skill.  
Experimental outlook for demonstration and research only.  
Variable: tsaira(deg C)  
Model initialised: 20161101  
Forecast period: NDJ, Lead time: 0 months



<http://poama.bom.gov.au/experimental/pasap/index.shtml>

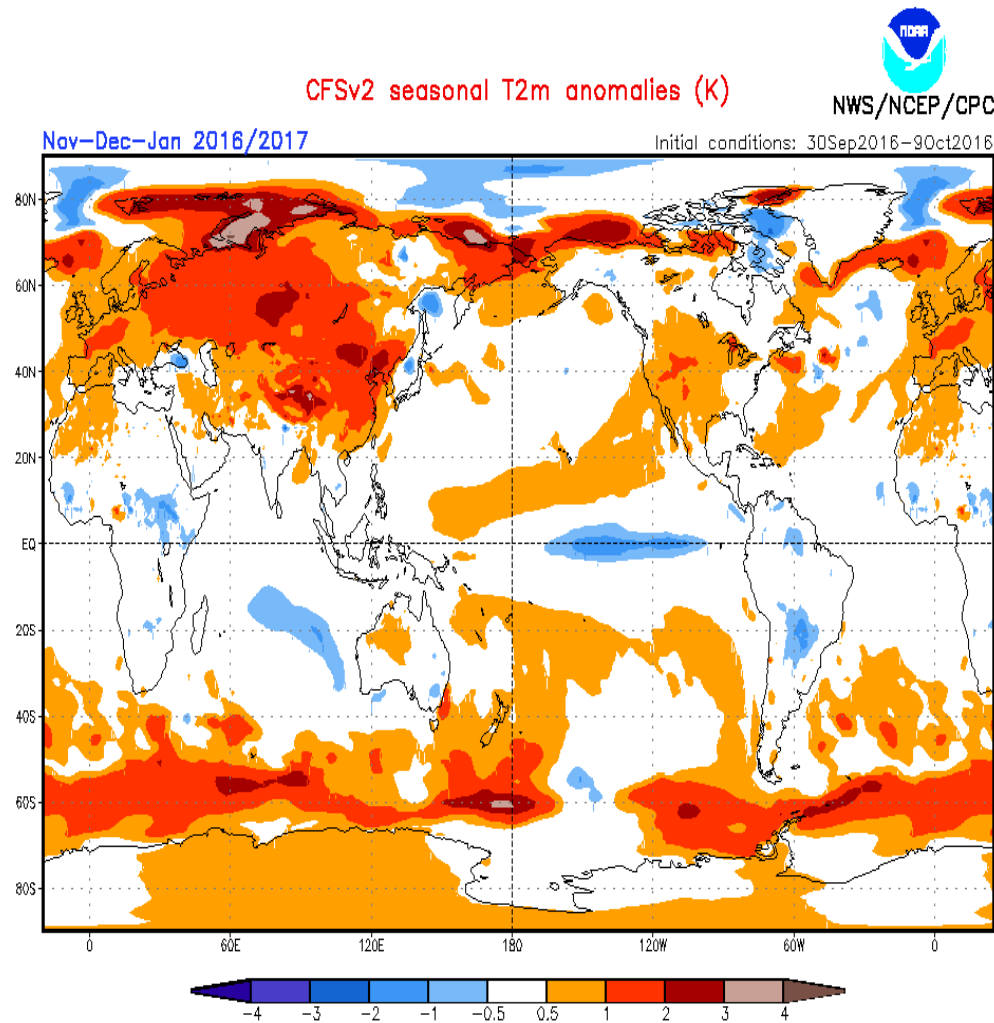
# IRI Air Temperature

IRI Multi-Model Probability Forecast for Temperature  
for November-December-January 2017, Issued September 2016



<http://iri.columbia.edu/our-expertise/climate/forecasts/seasonal-climate-forecasts/>

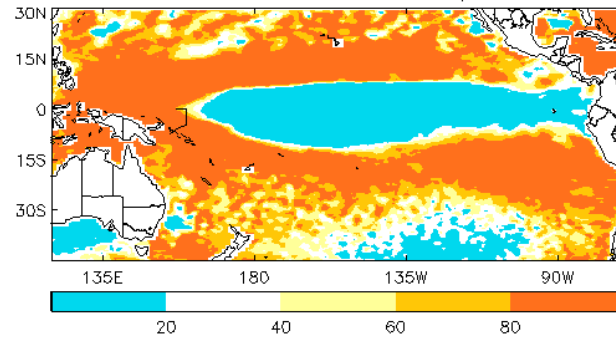
# NOAA NCEP coupled forecast system Model v2 Air Temperature



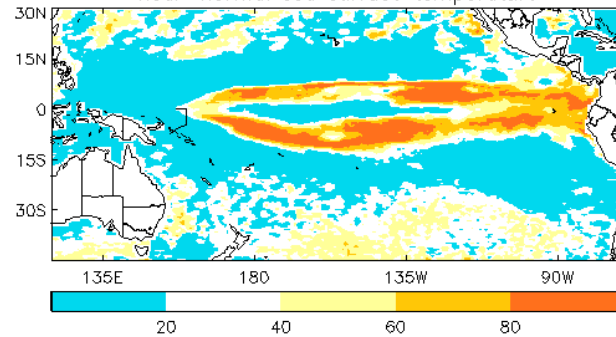
<http://origin.cpc.ncep.noaa.gov/products/people/wwang/cfsv2fcst/>

# UKMO Sea Surface Temperature

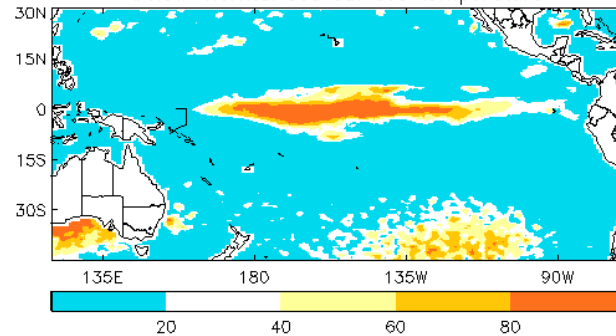
Probability of tercile categories Nov/Dec/Jan Issued Oct 2016  
above-normal sea surface temperature



near-normal sea surface temperature



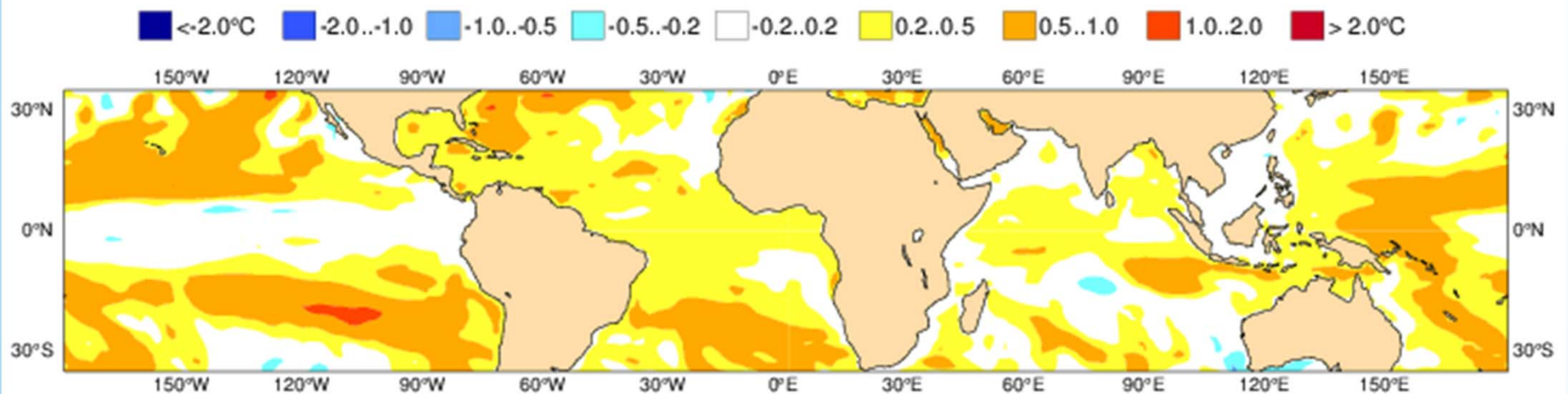
below-normal sea surface temperature



<http://www.metoffice.gov.uk/research/climate/seasonal-to-decadal/gpc-outlooks/glob-seas-prob>

ECMWF Seasonal Forecast  
Mean forecast SST anomaly  
Forecast start reference is 01/09/16  
Ensemble size = 51, climate size = 450

System 4  
NDJ 2016/17

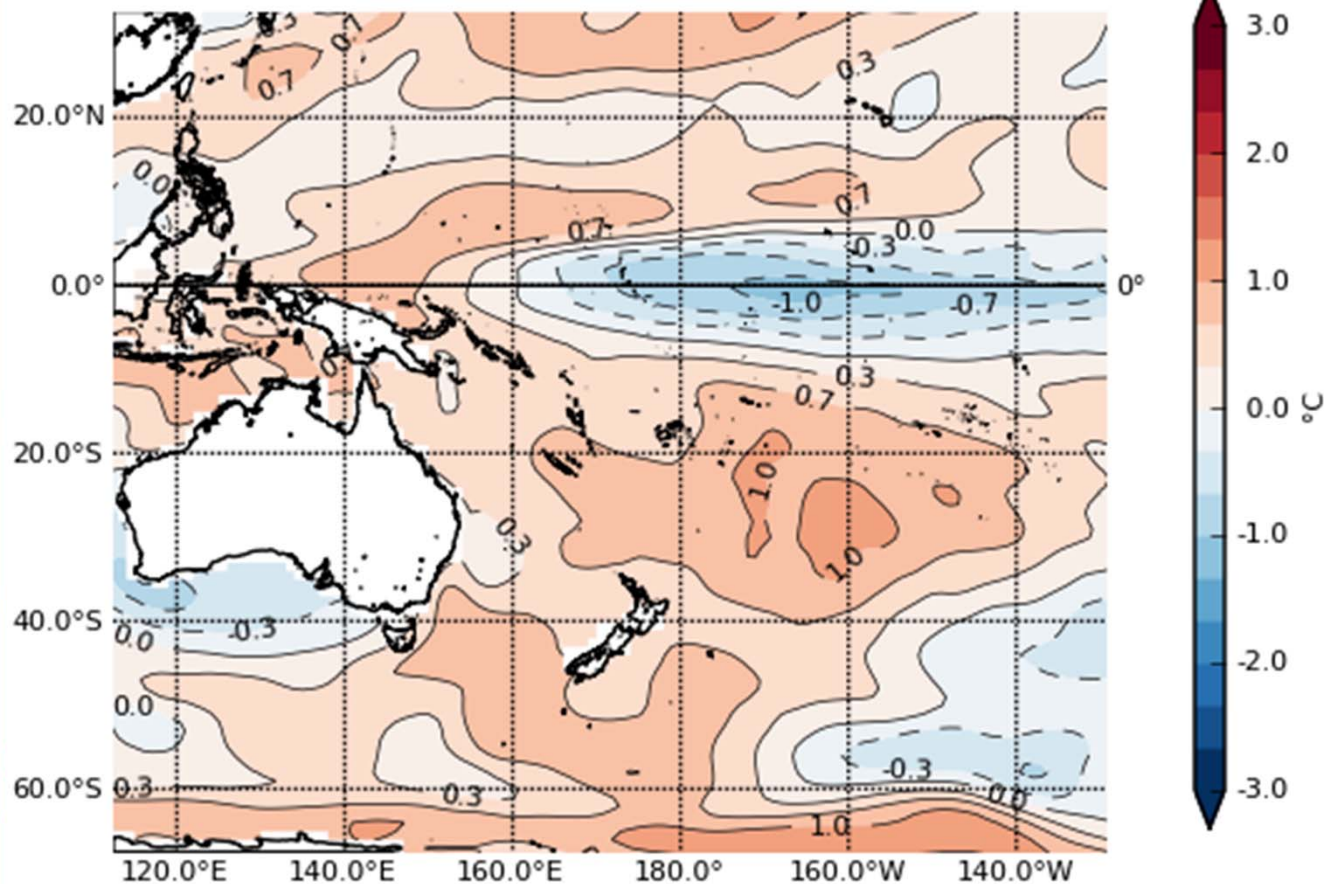


[http://www.ecmwf.int/en/forecasts/charts/seasonal/sea-surface-temperature-public-charts-long-range-forecast?time=2016090100,2904,2016123100&area=Tropics&forecast\\_type\\_and\\_skill\\_measures=tercile%20summary](http://www.ecmwf.int/en/forecasts/charts/seasonal/sea-surface-temperature-public-charts-long-range-forecast?time=2016090100,2904,2016123100&area=Tropics&forecast_type_and_skill_measures=tercile%20summary)



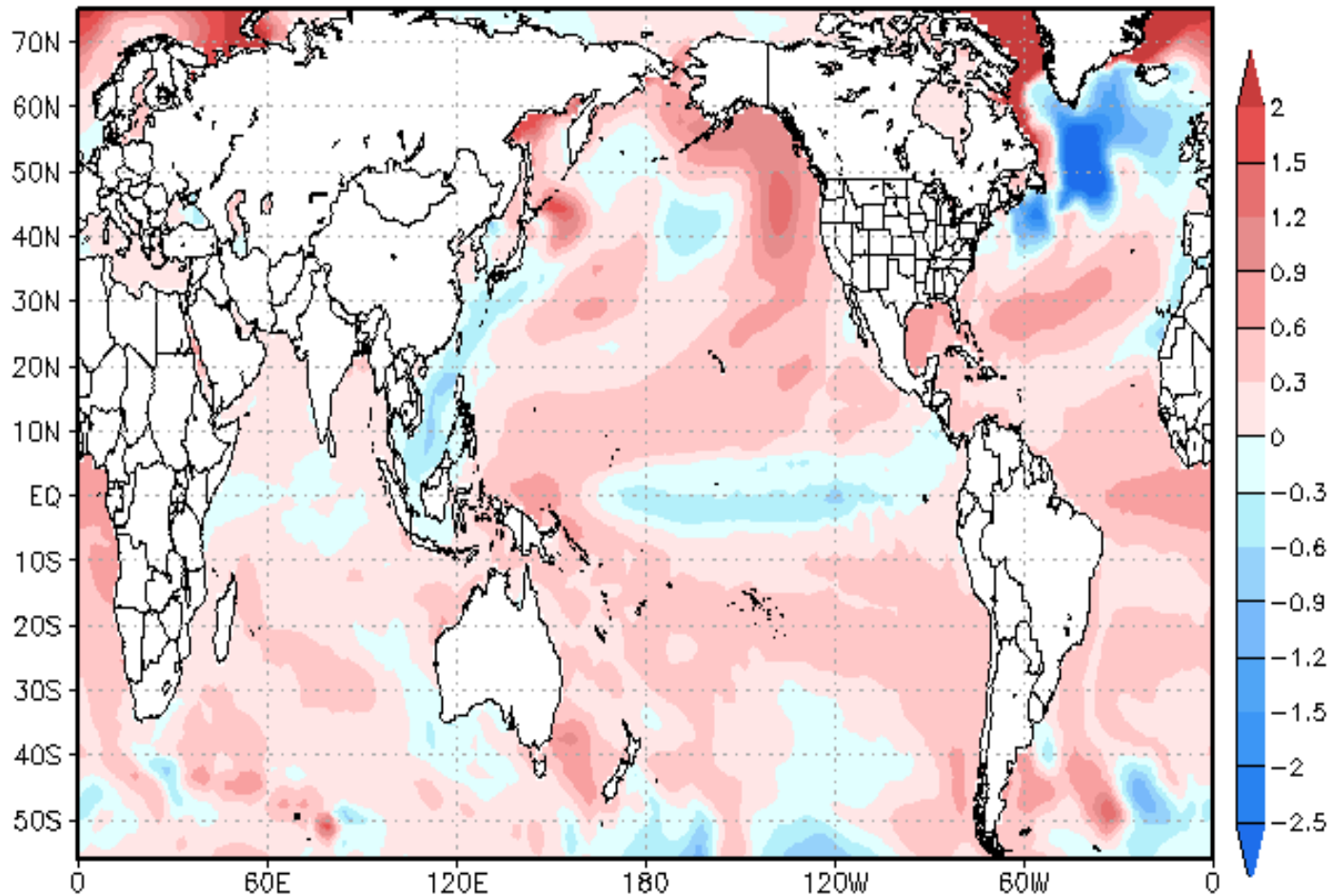
# POAMA Sea Surface Temperature

PACCSAP: Dynamical Seasonal Outlooks for the Pacific.  
Outlook based on POAMA 2 CGCM adjusted for historical skill.  
Experimental outlook for demonstration and research only.  
Variable: SSTA(deg C)  
Model initialised: 20161101  
Forecast period: NDJ, Lead time: 0 months

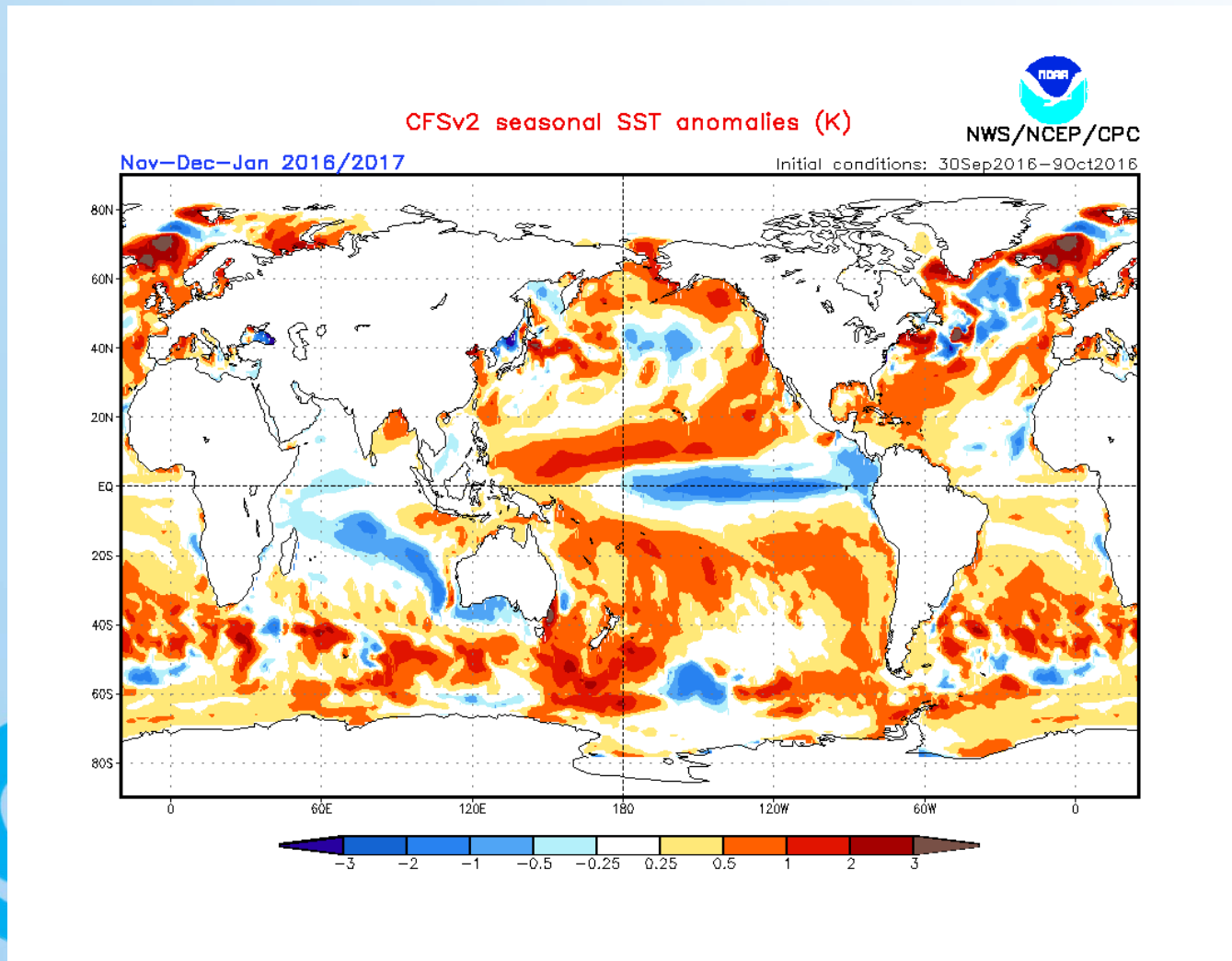


<http://poama.bom.gov.au/experimental/pasap/index.shtml>

Predicted DJF2016/2017 SSTA from 1sep2016 (9-member)



<http://www.jamstec.go.jp/fr/cgc/research/d1/iod/e/seasonal/outlook.html>



# Summary

