



Second Pacific Islands Climate Outlook Forum

PICOF-2

TC outlook (Nov. 2016 – Apr. 2017)

- NIWA, BoM, NZ Met. Service and PI-NMS

TC Outlook released officially the 14th of October

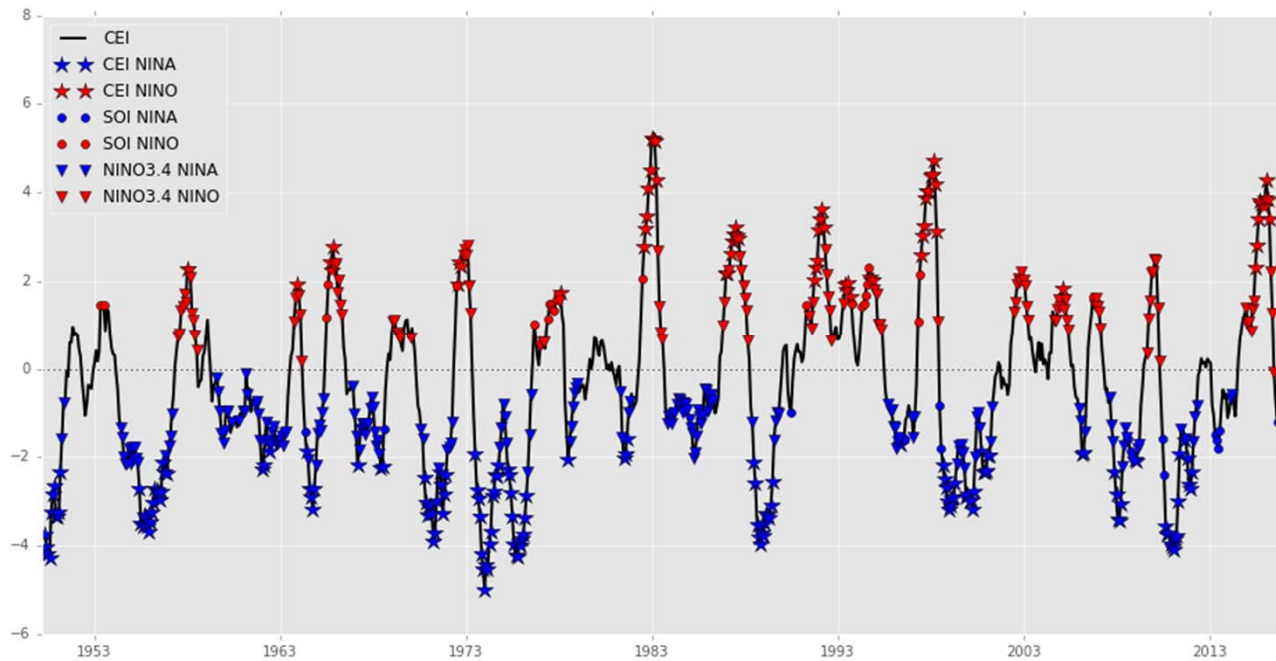
Outline

- 1) Some words on the methodology
- 2) Summary of the TC outlook statement
- 3) TC density anomalies maps

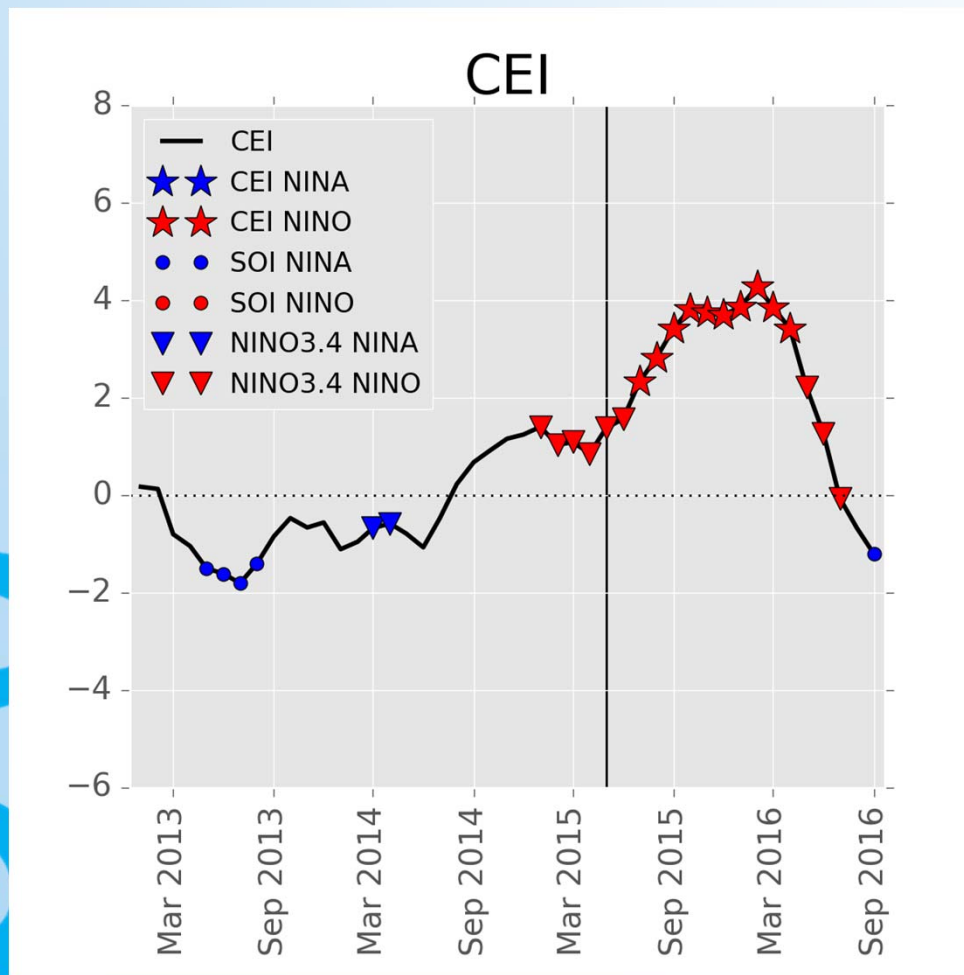
methodology

- Past May 2016 – September 2016 conditions analyzed (Coupled Enso Index, Gergis and Fowler, 2005)
- $CEI = 5 \text{ months ave. NINO3.4} / 3 \text{ months ave. SOI}$
- Thresholds: $\pm 0.5^{\circ}\text{C}$ for NINO3.4, $\pm 1 \text{ std}$ for SOI

methodology



methodology



methodology

- Six analog TC seasons:
1969/70; 1983/84; 1992/93; 1995/96; 2005/06; 2010/11
- Use of SpearTC (Diamond *et al*, 2012)
- Extraction of all TCs tracks for analog seasons, calculation of TC frequency on a 5°x5° grid, comparison with 1981-2010 climatological period

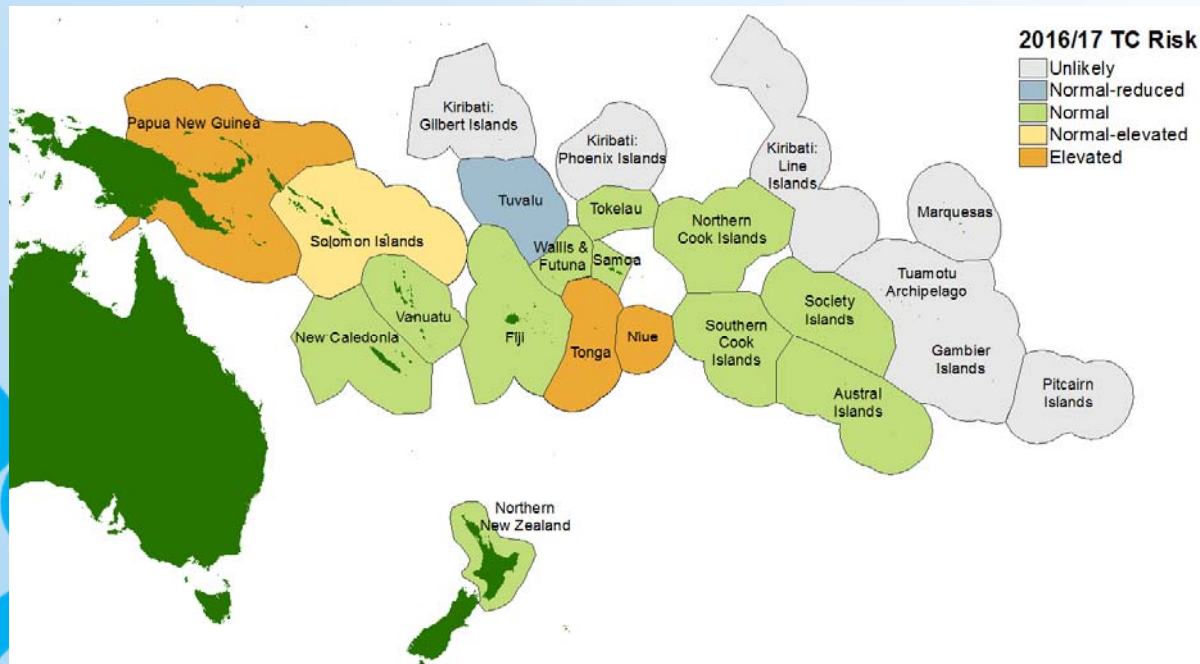
Summary of TC outlook statement

- near average numbers of tropical cyclones (TC) for the 2016–17 season (November 2016 to April 2017).
- 8 to 10 named TCs are expected (climatology: 12.4)
- TC activity is elevated for the Pacific Island countries to the north of the Coral Sea and close to the International Date Line near Tonga and Niue

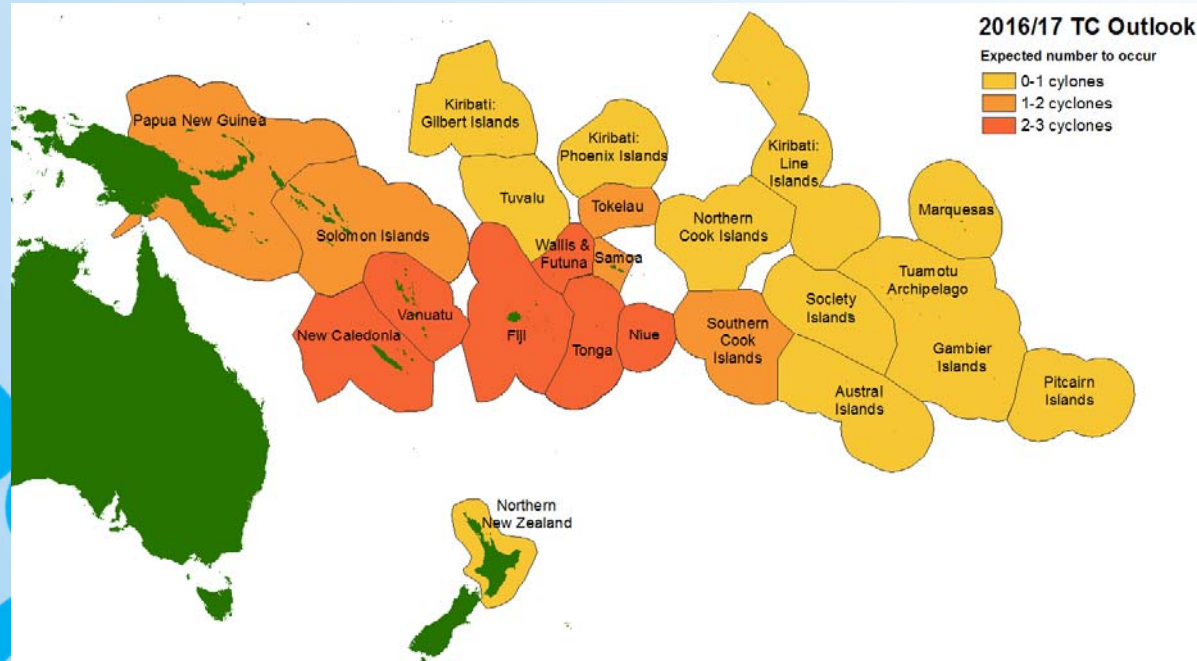
Southwest Pacific Tropical Cyclone Outlook: Moderate La Niña or neutral tropical conditions expected to produce near average activity across most islands



Summary of TC outlook statement



Summary of TC outlook statement



TC density maps

